

CCM 加拿大中信
CANADA

Life *Endures Forever*
in Transition *LOVE*

生命轉變處
沿途仍有愛

事工年報 ANNUAL REPORT

2019-2020

www.ccmcanada.org

總幹事的話

MESSAGE FROM THE EXECUTIVE DIRECTOR

年初，當疫情在本地爆發，我們作出各樣的防護措施。其後，更將全國六個中心關閉，希望減少對同工、義工，和活動參加者受感染的風險。抱著惶恐戰兢的心，希望疫情快些過去。

懇切的祈禱中，神卻給我們一個新的視野，在疫情中看到我們服侍的群體，更需要關懷、同行及援手。隨著聖靈的引導，中信隨即展開全面的抗逆同行運動。透過全人關懷，讓人們繼續經歷主在旁相伴，逆境中保護，及神愛無界限。

我誠意邀請大家，藉著今期的年報，一起洞察神在疫情中奇妙的作為。透過無私的承托，齊心建國度，讓基督的愛，充滿人間。

Earlier this year when the pandemic started, we began various preventive measures. But shortly after, all six of our centers had to be closed in order to reduce the risk to our staff, volunteers, and participants. We prayed, and continue to do so, that the pandemic would soon be over.

Through our prayers, God provided us with a new vision: the people we serve are now even more desperately in need of care and assistance. With the guidance of the Holy Spirit, we started the “CCM is with You” campaign which resulted in thousands of people experiencing the abundant love of and protection from our living God.

By reading this annual report, I sincerely invite you to discern the miraculous acts of God during the pandemic in the hopes that your faith, too, will be strengthened. With selfless commitment, let us all live out the Kingdom of God and spread the love of Christ throughout the world.

譚阜全博士
Dr. Thomas Tam
加拿大中信總幹事
Executive Director
CCM Canada



主在旁相伴

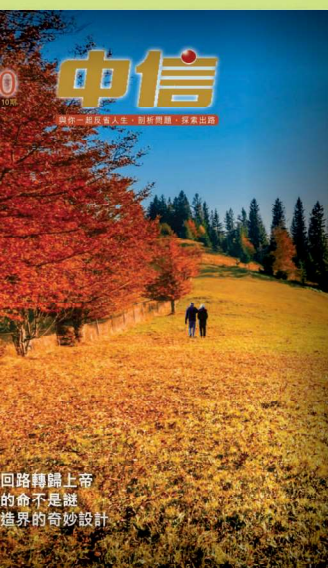
GOD Walks By the Side

“

我雖然行過死蔭的幽谷，也不怕遭害，
因為你與我同在，你的杖、你的竿都安慰我。

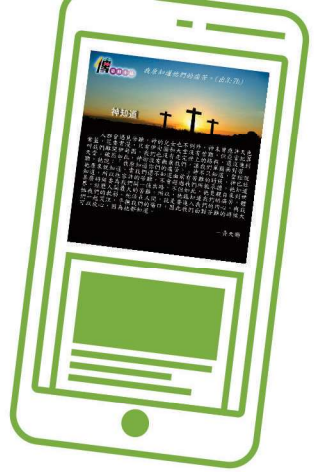
Even though I walk through the darkest valley, I will fear no evil,
for you are with me; your rod and your staff, they comfort me.

～ 詩篇 PSALM 23:4 ～



回路轉歸上帝
的命不是謎
造界的奇妙設計





神的話語及弟兄姊妹的見證，讓我們看見主常在旁伴著前行。我們堅持將刊物寄出，亦在 Facebook 每天登出靈修小品，及製作勵志短片在 YouTube 播放，藉此鼓勵和安慰讀者。

With words from God and testimonies from others, we know our God always walk alongside with us. CCM continued to mail out our magazines, publish daily devotionals on Facebook, and create inspirational videos on YouTube to encourage and comfort our readers.



逆境中保護

Protection in Adversity

“

保護你的是耶和華，耶和華在你的右邊蔭庇你。
白天太陽必不傷你，夜裡月亮必不害你。
耶和華要保護你脫離一切災禍，他要保護你的性命。
你出你入，耶和華要保護你，從現在直到永遠。

The Lord watches over you—the Lord is your shade at your right hand;
the sun will not harm you by day, nor the moon by night.
The Lord will keep you from all harm—he will watch over your life;
the Lord will watch over your coming and going both now and forevermore.

～ 詩篇 PSALM 121:5-8 ～





我們由三月開始製造及贈送布口罩，好使有需要的人不用搶購，亦讓前線的醫護人員有足夠的醫療口罩使用。這次全國性的行動共有超過100位義工聯同本地工廠製造超過15,000個布口罩及派發到各社區。

Since March, we have made and given out cloth masks to people in needs so that they do not have to compete with others to buy masks, and the frontline medical workers can have enough masks to use. This national campaign has involved over 100 volunteers and local factory to make over 15,000 cloth masks for our communities.

這些口罩形狀很好，又有出色的縫紉，可放進各類型的過濾材料，亦可在冬天用作保暖。
The masks are quite good with excellent sewing.
They can be inserted with any texture of clothes as filter and even be used for warmth in winter.

義工 VOLUNTEERS :

- 口罩能成為受惠者及時的保護
A timely and excellent gift
- 藉送口罩可將耶穌的愛及中信介紹給社區
A good chance to introduce Jesus' love and CCM Canada to our communities
- 很開心能與中信合作及能服侍有需要的人
Felt good to work with CCM and to care for others

受惠者 RECEIVERS :

- 95% 的回應都是正面的
Received 95% positive responses
- 欣賞口罩的設計及感謝中信的付出
Accepted with great appreciation
- 會在散步和購物時使用口罩
Good to use it for shopping and taking a walk

愛是沒界限

Love has No Boundary

“

因為我深信：無論是死、是生，是天使、是掌權的，是現在的事，是將來的事，是有能力的，是高天的、是深淵的，或是任何別的被造之物，都不能叫我們與神的愛隔絕，這愛是在我們的主耶穌基督裡的。

For I am convinced that neither death nor life, neither angels nor demons, neither the present nor the future, nor any powers, neither height nor depth, nor anything else in all creation, will be able to separate us from the love of God that is in Christ Jesus our Lord.

～ 羅馬書 ROMANS 8:38-39 ～



在 疫情前，我們各區關顧事工曾舉辦以下的活動：

- 危疾病患者探訪、支援小組及健康講座
- 長者探訪、支援小組及運動班
- 特殊需要兒童家庭的支援小組及聚會
- 其他支援小組（如腦創傷、帕金森、寡婦等）
- 各類型關顧的訓練及講座等等

在 疫情期間，部份支援小組活動及訓練移師在網上繼續進行。我們更將口罩送贈給不同社區及多個主流的關顧團體。

Before the pandemic, CCM Caring Ministries have been arranging these activities:

- Critical illness visitation, support group, and related seminars
- Seniors visitation, support group, and exercise classes
- Special Needs Parents Support Group, dinner, and fair
- Support groups and caring for brain injury, Parkinson disease, and widows
- Training and workshop for various types of caring need and more

During the pandemic lockdown, we continue to host some of the above activities online. We distribute facemasks to various communities and many mainstream caregiving organizations.

多謝！多謝！多謝中信送贈的口罩及中英對照的抗疫手冊。衷心感謝你們的愛心及悉心的預備。我們的房客很高興收到你們的口罩。

Thank you! Thank you! Thank you for the donation of masks and safety information (in both English and Chinese). We appreciate all the care and preparation effort. Our tenants were delighted to receive them.

Mary Ann *Tenant Resource Coordinator-Counsellor, Carter Place (senior independent living)*

長者之家

多謝你們送給Hope Mission的口罩。代表員工衷心感謝，你們令我們能保護自己及所服侍的人。

Thank you for your donation to Hope Mission! It's very much appreciated and I speak on behalf of all the staff thank you for helping us keep ourselves and our clients safe!

Amanda *Hope Mission (Christian organization, cares for homeless men, women and children in Alberta)*

關懷無家可歸者的
基督教機構

你並不孤單

You are Never Alone

“

不要懼怕，因為我與你同在；不要四處張望，因為我是你的神，
我必堅固你，我必幫助你；我必用公義的右手扶持你。

So do not fear, for I am with you; do not be dismayed, for I am your God.
I will strengthen you and help you;
I will uphold you with my righteous right hand.

～ 以賽亞書 ISAIAH 41:10 ～



#CCM is with You



在疫情前或當中，中信一直與社區中的家庭同行。透過實體及網上聚會幫助社區中的長者及有特殊需要兒童的家庭。青年及兒童事工亦藉著不同活動將基督教的信、望、愛灌輸給我們的下一代。我們更開展了「中信抗疫同行」事工與社區同行。

CCM has been walking along with families before and during pandemic. We connected with the seniors and special needs families in our community through various physical and virtual gatherings. The different programs offered by our children and youth ministry continue to install a Christian worldview of faith, hope, and love to our younger generation. CCM has also started "CCM is with You" campaign to walk with communities.



聯繫無休止 Never Stop Connecting



你們要住在我的裡面，我也就住在你們裡面。
 枝子若不連在葡萄樹上，自己就不能結果子…
 如果你們遵守我的命令，就必定住在我的愛裡，
 正像我遵守了我父的命令，住在他的愛裡一樣。

Remain in me, as I also remain in you.
 No branch can bear fruit by itself; it must remain in the vine.
 Neither can you bear fruit unless you remain in me.
 If you keep my commands, you will remain in my love,
 just as I have kept my Father's commands and remain in his love.

～ 約翰福音 JOHN 15:4,10 ～



Instagram

CCMiswithYou Matching Fund Campaign

This campaign is to support our four major CCMiswithYou initiatives.

Link in the bio

How to support your local community as restrictions loosen

Blessed are those who have regard for the weak; the LORD delivers them in times of trouble.

Psalms 41:1

CCM 中僑 抗疫同行 計劃

CCMiswithYou Matching Fund Campaign

2020-8-22

報名資料及詳情將於稍後公布，請密切留意

Registration and details are coming soon

CCM 中僑 精神舞

2020-8-22

報名資料及詳情將於稍後公布，請密切留意

Registration and details are coming soon

8 Things You Can Do During The Quarantine

NOT TODAY

#COVID19



在 疫情期間，中信加強在網上與社區聯繫。除了在 Facebook 及 Instagram 發放靈修資料及資訊外，亦每月用電郵向近四千名中信之友分享事工近況及需要。我們在 Facebook 上接觸了超過三萬個用戶。除此之外，更在 Zoom 舉行各類型的講座及課程。

During the pandemic, CCM has strengthened our online connection with the community. Besides posting devotional and informational materials regularly on Facebook and Instagram, we have sent our ministries updates and needs via email monthly to near 4,000 supporters. Our Facebook posts have reached more than 30,000 users. Moreover, we have continually hosted various workshops, trainings, and courses via Zoom.



@ChineseChristianMissionCanada



ccm canada



ccmcanada.ig

齊心建國度

Build His Kingdom Together

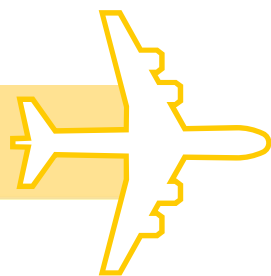
“

他所賜的，有作使徒的，有作先知的，有作傳福音的，
也有作牧養和教導的，為的是要裝備聖徒，
去承擔聖工，建立基督的身體。

So Christ himself gave the apostles, the prophets, the evangelists,
the pastors and teachers, to equip his people for works of service,
so that the body of Christ may be built up.

～ 以弗所書 EPHESIANS 4:11-12 ～





在 去年，我們曾安排了不同的宣教活動：

- 哥斯達黎加短宣：幫助當地教會証道，舉行福音聚會，帶領祈禱會和探訪工作；
- 泰北短宣：教授當地學生英文及主領營會。當地的年青人得著造就，我們年青隊員宣教的心也得而啟蒙；
- 小城宣教：超過30間教會與我們將基督的愛傳送到小城的居民。

在疫情影響下，我們透過互聯網繼續與海外及小城的信徒進行培訓，祈禱及查經。

During last year, we had arranged various mission trips:

- **Costa Rica:** We served by preaching, hosting evangelical meeting, leading prayer meeting, and visiting nearby small towns. They were well received by the local churches;
- **Northern Thailand:** We served by teaching English and organizing English camps for students there. These became blessing of local youth and have developed the mission heart of our youths;
- **Small towns:** There were over 30 churches participated with us to convey love and care to small town people.

Under the travel restriction due to COVID-19, we continue to convey online trainings, bible studies, and prayer meetings.



身心靈關懷 Holistic Care

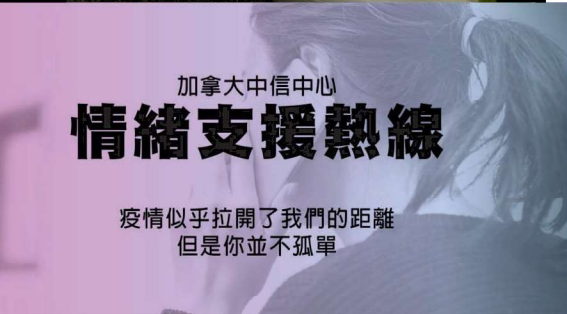


你們務要常存弟兄相愛的心。不可忘記用愛心接待客旅；
因為曾有接待客旅的，不知不覺就接待了天使。
你們要記念被捆綁的人，好像與他們同受捆綁；
也要記念遭苦害的人，想到自己也在肉身之內。

Keep on loving one another as brothers and sisters.
Do not forget to show hospitality to strangers,
for by so doing some people have shown hospitality to angels
without knowing it.

Continue to remember those in prison
as if you were together with them in prison,
and those who are mistreated as if you yourselves were suffering.

～ 來伯來書 HEBREWS 13:1-3 ～



加拿大中信中心 情緒支援熱線

疫情似乎拉開了我們的距離
但是你並不孤單

各城市熱線電話

- 溫哥華
粵語、英語
- 卡加利
粵語、英語
- 愛民頓
粵語、英語
- 滿地可
粵語、英語
- 多倫多
粵語、英語

CCM 中信
抗疫同行

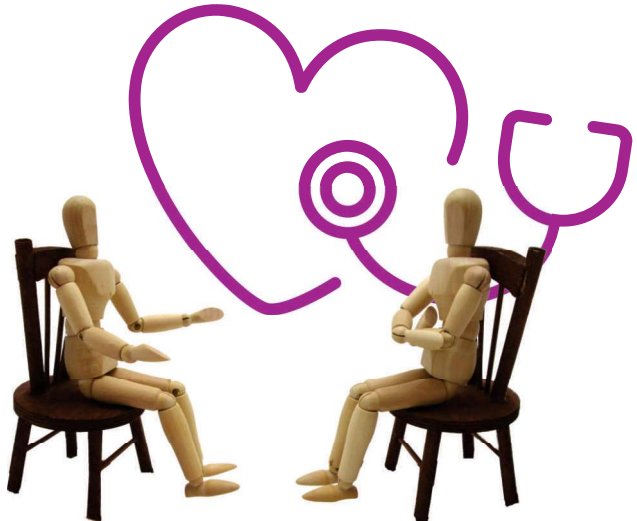
卡城中信中心
國、粵語社區支援服務

- E.I. 失業金**
填寫申請失業金服務
免費協助有需要人士填報失業金申請，詳情請電 587-432-5370。
- Special Needs**
特殊需要兒童家庭支援
為特殊需要兒童家庭在疫情下提供諮詢及聯絡政府資源服務。請電403-233-8763查詢服務詳情。
- 抗疫/逆情緒支援熱線**
疫情風暴下，心理壓力大增，令人覺得孤單、情緒低落、甚至困擾。專業輔導員透過電話為你打氣 587-434-2930。
- 網上視像情緒健康講座**
由專業輔導員、社工、心理學家輪流講解在疫情下如何建立健康情緒及態度。詳情請電 403-233-8763 或留意facebook/calgaryccm最新消息。



信的「靈機輔導」提供專業輔導及心理治療，協助處理各類情緒及人際關係的問題。關注精神健康更是重點事工之一。在疫情期間，我們成立了情緒支援熱線，在網上進行有關精神健康的講座，亦將在今年8月推出一個精神健康高峰會，讓受情緒困擾者舒緩緊張及不安，並讓弟兄姊妹及教牧同工了解及重視精神健康的問題。部份熱線將發展成恒常的電話關顧服務。

Our Linkage counselling service are providing counselling services helping people to deal with emotional and relationship problems. Mental health wellness has always been one of our key focuses. During the pandemic, we have started emotional support hotlines, hosted various mental health related online workshops, and will be launching a mental health summit in August this year to help the affected, and to make aware of this issue. The hotlines at some cities will develop into a regular tele-care service.



無私的承托

Selfless Supports

“

各人要照著心裡所決定的捐輸，不要為難，不必勉強，因為捐得樂意的人，是神所喜愛的。神能把各樣的恩惠多多地加給你們，使你們凡事常常充足，多作各樣的善事。

Each of you should give what you have decided in your heart to give, not reluctantly or under compulsion, for God loves a cheerful giver. And God is able to bless you abundantly, so that in all things at all times, having all that you need, you will abound in every good work.

～ 哥林多後書 2 CORINTHIANS 9:7-8 ～



在過去一年，藉著董事會背後默默的支持、同工盡心盡力的服侍、義工在所不辭的幫助及一班中信之友無私的奉獻，我們得以履行從神而來的異象，繼續服侍社區中的弱勢社群，為他們發聲。

在疫情之中，「加拿大中信慈善基金會」亦啟動了「中信抗疫同行配對基金計劃」，以支持這些事工：關懷服務、精神健康及輔導服務、跨文化的瞭解及青年創業及就業計劃。我們需要您的同行，去籌募共五十萬元的善款。在基金會的配對下，這一百萬將用來幫助弱勢社群因疫情而衍生有關情緒及就業的需要。

Last year, through the continuous support by the board of directors, the all-out efforts by the staff, untiring contributions by the volunteers, and the selfless offering by the supporters, CCM continued to carry out the vision given by God to serve the vulnerable groups in our communities and to be the voice for the voiceless.

During the pandemic, CCM Canada Charitable Foundation (CCMCCF) has also launched the "CCM is with You Matching Fund Campaign" to support these initiatives: caring services, mental health & counselling services, cross-cultural understanding, and youth Entrepreneurship/Employment. We will need your support to fundraise \$500,000 during this campaign, and with a matching fund promised by CCMCCF, we are aiming to raise \$1 million to address the tangible mental health and employment needs of vulnerable groups during and after the COVID-19 Crisis.



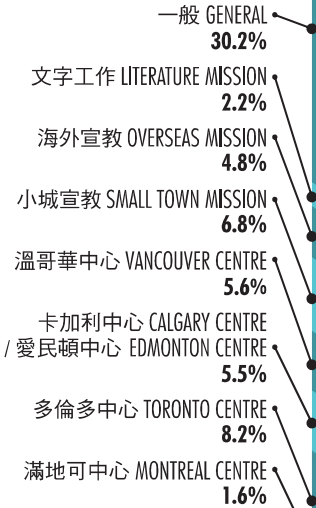
財政報告 FINANCIAL REPORT 2019

其他收入 OTHER INCOMES \$1,059,480 (35.1%)

租金、各項收費、服務費用及政府資助
Rental, fees, service charges and grants



奉獻 OFFERING \$1,956,924 (64.9%)



總收入 TOTAL REVENUE
\$3,016,404
總支出 TOTAL EXPENSES
\$2,833,540

財政近況 FINANCIAL SNAPSHOT JAN-SEP 一至九月 2020

總收入 TOTAL REVENUE
\$1,312,591

總支出 TOTAL EXPENSES
\$1,635,020

不敷 DEFICIT
\$322,429

統計數字 STATISTICS

文字宣教 LITERATURE MISSION

≡ 刊物分發數字 MAGAZINES DISTRIBUTION STATISTICS

	個人 INDIVIDUALS	教會及其他 CHURCHES & OTHERS	合共 TOTAL	網上閱覽 ONLINE VIEWS
中信月刊 CHINESE TODAY (繁體 TRADITIONAL)	8,197	5,924	14,121	7,729
中信月刊 CHINESE TODAY (簡體 SIMPLIFIED)	593	2,840	3,433	6,544
傳 PROCLAIM	454	1,134	1,588	4,649
CHALLENGER	300	803	1,103	1,038

≡ 社交網絡數字 SOCIAL MEDIA STATISTICS

參與互動人數 ENGAGED INDIVIDUALS*

529

*包括閱覽、按讚、分享文章等
Includes reading, like and sharing posts

小城宣教 SMALL TOWN MISSION

≡ 全國統計數字 NATIONAL STATISTICS

	服務人數 INDIVIDUALS SERVED	出席人數 ATTENDANCE	義工人數 VOLUNTEERS	義工工時 VOLUNTEER HOURS	參與教會 CHURCHES PARTICIPATED
聚會 EVENT / 節目 PROGRAM	1,640	2,155	102	700	113
靈命培育 SPIRITUAL TRAINING	269	769	26	130	35
探訪 VISITATION	791	881	454	1,542	113

海外宣教 OVERSEAS MISSION

≡ 全國統計數字 NATIONAL STATISTICS

	服務人數 INDIVIDUALS SERVED	出席人數 ATTENDANCE	義工人數 VOLUNTEERS	義工工時 VOLUNTEER HOURS	參與教會 CHURCHES PARTICIPATED
聚會 EVENT / 節目 PROGRAM	440	590	18	144	3
靈命培育 SPIRITUAL TRAINING	385	1,190	30	802	38
探訪 VISITATION	60	60	16	80	2

城市宣教 URBAN MISSION

≡ 全國統計數字 NATIONAL STATISTICS

	服務人數 INDIVIDUAL SERVED	出席人數 ATTENDANCE	義工人數 VOLUNTEERS	義工工時 VOLUNTEER HOURS
福音事工 EVANGELISM	579	5,422	268	1,485
危疾關顧 CARING - CRITICALLY ILL	1,637	4,174	275	8,848
口罩事工 CARING - FACEMASKS	15,144	15,240	77	1,276
特殊需要兒童關顧 CARING - SPECIAL NEEDS	977	1,373	117	411
長者關顧 CARING - SENIORS	1,452	5,050	193	1,722
輔導服務 COUNSELLING	632	1,596	88	1,304
家庭事工 FAMILY	3,090	12,156	892	7,923
社區服務 COMMUNITY SERVICES	5,989	27,068	537	4,069
總數 TOTAL	29,500	72,079	2,447	27,038

≡ 各地中信中心數字 CCM CENTRES STATISTICS

	溫哥華 VANCOUVER	卡加利 CALGARY	愛民頓 EDMONTON	多倫多 TORONTO	滿地可 MONTREAL
總服務人數 TOTAL NUMBER OF INDIVIDUAL SERVED	14,523	2,678	1,165	7,190	3,944
總出席人數 TOTAL NUMBER OF ATTENDANCE	43,691	4,408	1,534	17,688	4,758

網絡宣教 ONLINE MISSION

≡ 全球統計數字 GLOBAL STATISTICS

	出席人數 ATTENDANCE	義工人數 VOLUNTEERS	義工工時 VOLUNTEER HOURS
課程 COURSE / 講座 SEMINAR	53,620	95	7,220



加拿大中信董事會 CCM CANADA BOARD OF DIRECTORS

主席 CHAIR

馬叔和醫生 卑詩 BC
Dr. Ian Ma

陳孟賢博士 安省 ON
Dr. Anthony Chan

陳明斌牧師 卑詩 BC
Rev. Paul Chan

何鄭愛暉女士 卑詩 BC
Mrs. Ruth Ho

詹可欣傳道 卑詩 BC
Pastor Janet Jim

簡穎湘女士 卑詩 BC
Ms. Angela Kan

羅志明牧師 卑詩 BC
Rev. Xavier Law

李沛明博士 亞省 AB
Dr. Lawrence Lee

李健昌律師 安省 ON
Mr. Sammy Lee

梁穗光先生 卑詩 BC
Mr. Jolland Leung

李國揚先生 卑詩 BC
Mr. Benjamin Li

梁斐生博士 安省 ON
Dr. David Liang

廖錦榕會計師 亞省 AB
Mr. James Liu

羅華慶牧師 卑詩 BC
Rev. Fah King Lo

毛學隆牧師 諾省 NS
Rev. Alen Mao

馬天佐牧師 安省 ON
Rev. George Mah

蘇 蘋傳道 卑詩 BC
Pastor Ping Su

譚阜全博士 卑詩 BC
Dr. Thomas Tam

黃可正博士 亞省 AB
Dr. William Wong

胡經世會計師 卑詩 BC
Mr. Peter Wu



加拿大中信慈善基金會董事會 CCM CANADA CHARITABLE FOUNDATION BOARD OF DIRECTORS

主席 CHAIR

梁穗光先生 卑詩 BC
Mr. Jolland Leung

鄭志傑律師 卑詩 BC
Mr. Clarence Cheng

簡穎湘女士 卑詩 BC
Ms. Angela Kan

郭子源先生 卑詩 BC
Mr. Edwin Kwok

李沛明博士 亞省 AB
Dr. Lawrence Lee

李健昌律師 安省 ON
Mr. Sammy Lee

李國揚先生 卑詩 BC
Mr. Benjamin Li

廖錦榕會計師 亞省 AB
Mr. James Liu

雷吳曼麗女士 卑詩 BC
Ms. Mary Lui

譚阜全博士 卑詩 BC
Dr. Thomas Tam

胡經世會計師 卑詩 BC
Mr. Peter Wu

葉家宗先生 安省 ON
Mr. Samuel Ip



CCM CANADA 加拿大中信

4533 KINGSBOROUGH STREET, BURNABY, BC, V5H 4V3

TEL: (604) 877-8606 | FAX: (604) 877-8676 | EMAIL: CCM@CCMCANADA.ORG

CCM CENTRE 中信中心



溫哥華 4533 Kingsborough Street, Burnaby, BC V5H 4V3
tel: 604-877-8606 fax: 604-877-8676
email: burnaby@ccmcanada.org

列治文 #2320-8260 Westminster Hwy., Richmond, BC V6X 3Y2
tel: 604-285-0552 fax: 604-285-0582
email: richmond@ccmcanada.org



卡加利 #209-108 3rd Ave. S.W., Calgary, AB T2P 0E7
tel: 403-233-8763
email: calgary@ccmcanada.org



愛民頓 #102-6030 88th St., Edmonton, AB T6E 6G4
tel: 587-982-8111
email: edmonton@ccmcanada.org



多倫多 #3107-4438 Sheppard Ave. E, Scarborough, ON M1S 5V9
tel: 416-291-3202 fax: 647-436-4768
email: toronto@ccmcanada.org



滿地可 #102-870 Decarie Blvd., Saint-Laurent, QC H4L 3L9
tel: 514-878-3113 fax: 514-878-3113
email: montreal@ccmcanada.org